



# **PTZ Camera V3.201.0000006.0.R. 251219**

## **Release Notes**



ZHEJIANG DAHUA VISION TECHNOLOGY CO., LTD.

# Table of Contents

<b>1 Release Notes.....</b>	<b>1</b>
<b>1.1 Overview.....</b>	<b>1</b>
<b>1.2 New Features.....</b>	<b>1</b>
<b>1.3 Fixed Bugs.....</b>	<b>2</b>
<b>1.4 Compatibility.....</b>	<b>3</b>
1.4.1 Program.....	3
1.4.2 Browser.....	3
1.4.3 Third-Party Access.....	3
<b>1.5 Software Environment.....</b>	<b>3</b>
<b>1.6 Pending Issues.....</b>	<b>3</b>
<b>2 Update Guide.....</b>	<b>4</b>
<b>2.1 Introduction.....</b>	<b>4</b>
<b>2.2 Preparation.....</b>	<b>4</b>
<b>2.3 Instructions .....</b>	<b>4</b>
2.3.1 Updating by ConfigTool.....	4
2.3.2 Updating through the Webpage.....	6
2.3.3 Cloud Update through the Webpage.....	7
2.3.4 Cloud Update through DMSS.....	8
<b>2.4 Checking for Update Success.....</b>	<b>9</b>

# 1 Release Notes

## 1.1 Overview

Product name	PTZ Camera
Version	V3.201.0000006.0.R.251219
Software package information	DH_SD-Chen-Gauss-Civil_MultiLang_PN_Stream3_V3.201.0000006.0.R.251219.zip DH_SD-Chen-Gauss_MultiLang_PN_Stream3-xiaobei-NumberStat_V3.201.0000006.0.R.251219.zip DH_SD-Chen-Gauss_MultiLang_PN_Stream3-xiaobei_V3.201.0000006.0.R.251219.zip DH_SD-Chen-Gauss_MultiLang_PN_Stream3_V3.201.0000006.0.R.251219.zip DH_SD-Gauss-Civil_MultiLang_PN_Stream3-xiaobei_V3.201.0000006.0.R.251219.zip DH_SD-Gauss-Civil_MultiLang_PN_Stream3_V3.201.0000006.0.R.251219.zip DH_SD-Gauss_MultiLang_PN_Stream3-NumberStat_V3.201.0000006.0.R.251219.zip DH_SD-Gauss_MultiLang_PN_Stream3-xiaobei-NumberStat_V3.201.0000006.0.R.251219.zip DH_SD-Gauss_MultiLang_PN_Stream3-xiaobei_V3.201.0000006.0.R.251219.zip DH_SD-Gauss_MultiLang_PN_Stream3_V3.201.0000006.0.R.251219.zip DH_SD-Gauss_MultiLang_P_Stream3_V3.201.0000006.0.R.251219.zip DH_SD-Gauss_MultiLang_PN_Stream3-SDLOW_V3.201.0000006.0.R.251219.zip
OS requirement	None
Release date	December 30, 2025

## 1.2 New Features

V3.201.0000006.0.R.251219

No.	Function	Description	Model
1	New Materials	Compatible with new materials.	SD49 and SD1A

V3.201.0000004.0.R.251110

No.	Function	Description	Model
1	SSH Port	Supports configuring the SSH port on the webpage.	
2	Password Reset	Supports password reset across network segments.	
3	Default Auto Registration Port	Adjusted the default automatic registration port from 7000 to 9500.	
4	Preset Name	Provides an external interface service that allows modifying present names individually.	
5	OSD Overlay of Battery Info	If battery information is unavailable, the OSD will not display any battery data.	SD49 low-power product
6	Font Size	Added 2 font size options equal to 1/32 and 1/15 of the frame's short side.	

3.201.0000002.3.R.251014

No.	Function	Description	Model
1	New Materials	Compatible with new materials.	SD6C3 and SD4A

V3.201.0000002.2.R.2509268

No.	Function	Description
1	Reduced Device Startup Time	The startup time of the device has been reduced by 18 seconds.
2	Manual Tracking	Manual tracking is effective only when the perimeter function is enabled, improving the user experience when the perimeter is turned off.

## 1.3 Fixed Bugs

V3.201.0000006.0.R.251219

No.	Fixed Bug
1	Fixed an issue on SD1A where 3 IR LEDs turned on simultaneously under low-light conditions.

V3.201.0000004.0.R.251110

No.	Fixed Bug
1	Fixed a network issue caused by frequent physical disconnections of fiber optic products.
2	Fixed an issue that caused the Focus Compensation option to be missing on some small dome cameras (SD22, SD29, SD3E, SD3C).

V3.201.0000002.1.R.250918

No.	Fixed Bug
1	Fixed an issue that caused frequent failures in passwordless web redirection.

## 1.4 Compatibility

### 1.4.1 Program

The program is forward-compatible. But the V3.201 version cannot be downgraded to V3.200.

### 1.4.2 Browser

- IE: IE11 or later.
- Google Chrome: 65 or later.
- Firefox: 65 or later.
- Safari: 12 or later.

### 1.4.3 Third-Party Access

1. CGI: V2.91.3.12.
2. ONVIF testing tool: V25.06.
3. ONVIF: Supports Profile S, Profile G, Profile T, and Profile M.
4. MILESTONE testing tool: Xprotect Corporate 2023 R3, device pack 13.0a.

## 1.5 Software Environment

Category	Model	Version
NVR	DH-NVR5864-I/L	V4.002.0000000.1
Client	SmartPSS	V1.003.0000002.0.R.221230
Tool	Player	V4.000.0000000.5.F01.R.20180515
	ConfigTool	V5.000.0000001.8.R.20210625
Keyboard	NKB1000	V2.620.0000000.0.R.20180115
Platform	ICC-B8900	V5.000.0000012.5.R.20221209
IVSS	IVSS708	V2.004.0000000.0.R.211021

## 1.6 Pending Issues

No.	Issue Description	Possible Result	How to Fix
1	None.		

## 2 Update Guide

### 2.1 Introduction

This section introduces how to update the PTZ camera to the latest version. The update methods include updating by ConfigTool and DMSS app, through local update package, and cloud update on the webpage.

### 2.2 Preparation

Before the update, please ensure that the following conditions are met.

- Update by ConfigTool: The device can work normally; the computer is installed with ConfigTool; the device is on the same network as the computer; the update package is ready.
- Update by local package: The device can work normally; the device is on the same network as the computer that is used to log in to the webpage; the update package is ready.
- Cloud update on the webpage: The device can work normally, and the device is on the same network as the computer that is used to log in to the webpage.
- Update by DMSS app: The device can work normally; the mobile phone is installed with DMSS app; the device is added to DMSS app.



- Decompress the program package before the update, otherwise the tool might not find the bin file to be updated.
- Check whether the device model and program version are correct before the update.

### 2.3 Instructions

#### 2.3.1 Updating by ConfigTool

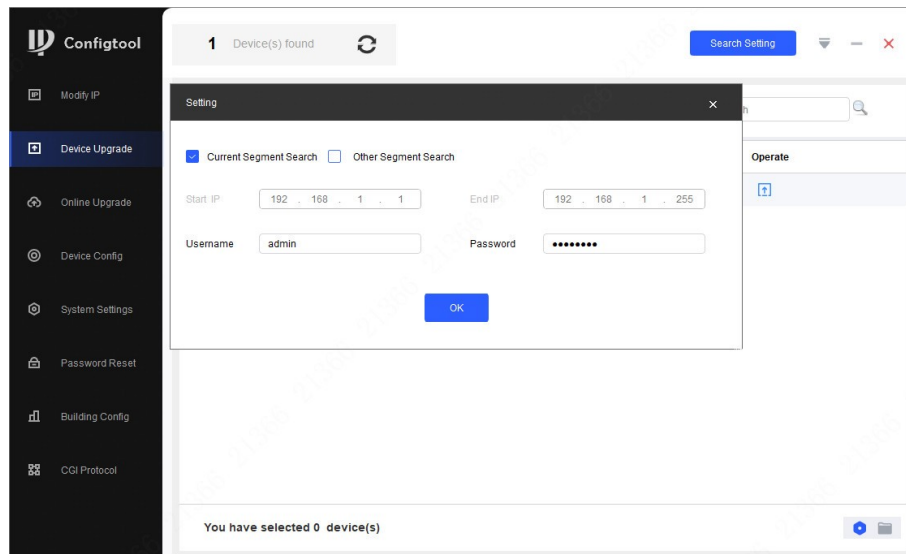
##### 2.3.1.1 Updating One by One

Use this update method when you need to update a single device.

Step 1 Open ConfigTool, and then select **Device Upgrade**.

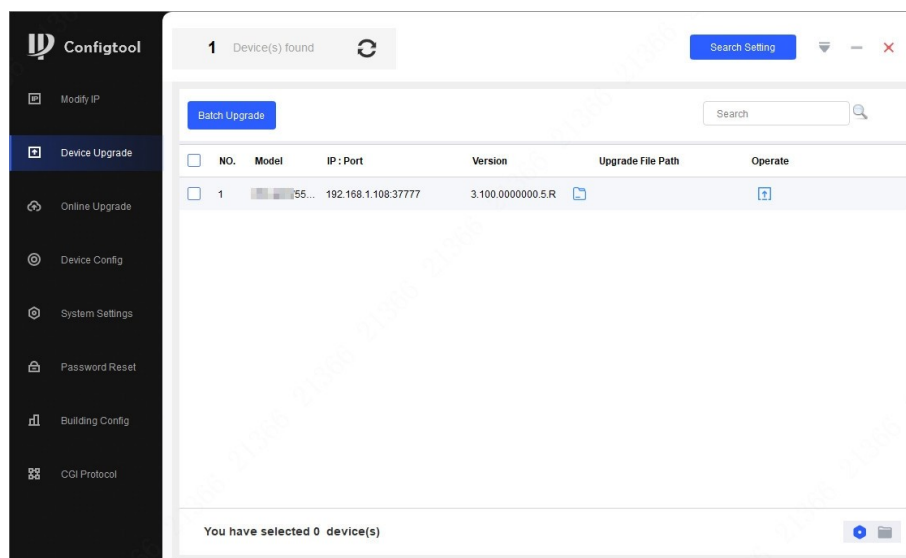
Step 2 Click **Search Setting** to set the search conditions.


Figure 2-1 Set search conditions



**Step 3** Select **Current Segment Search**, change the password to the PTZ camera password, and then click **OK**.

Figure 2-2 View search result



**Step 4** Click  next to the device to be updated, and then select the update file.

**Step 5** Click  to start to update the system.

The device automatically restarts after the update is complete.



If the system update fails, check the prompt on the ConfigTool to see the reason.

**Step 6** After the device restarts, check the system version.

If the version is the same as the software version of the update package, it means the update is successful.

### 2.3.1.2 Updating in Batches

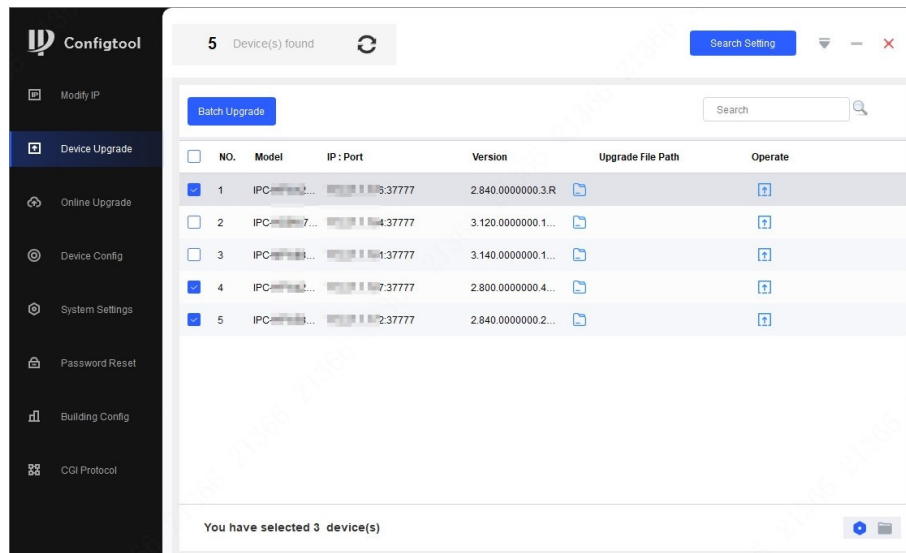
Use this method when you need to update multiple devices to the same software version.

**Step 1** Open ConfigTool, and then select **Device Upgrade**.

**Step 2** Click **Search Setting** to set the search conditions.

**Step 3** Select **Current Segment Search**, change the password to the PTZ camera password, and then click **OK**.

Figure 2-3 View search result



**Step 4** Select the devices to be updated, and then click **Batch Upgrade**.



The selected devices must be updated to the same software version.

**Step 5** Click **Browse** to select the update package.

**Step 6** Click **OK** to start to update the system.

The device automatically restarts after the update is complete.



If the device update fails, update again in the following ways.

- Check whether the update file is correct. If the update file is incorrect, change the file to the correct one before the update.
- Restart ConfigTool, and log in to this tool again to update the device.
- We recommend you use the latest version of ConfigTool.

**Step 7** After the device restarts, check the system version.

If the version is the same as the software version of the update package, it means the update is successful.

## 2.3.2 Updating through the Webpage

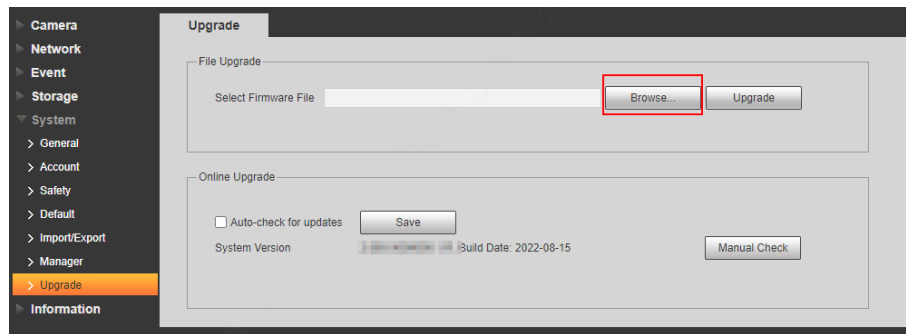
### Procedure

**Step 1** Log in to the webpage of the device.

**Step 2** Select **Settings** > **System** > **Update** to enter the system update page.

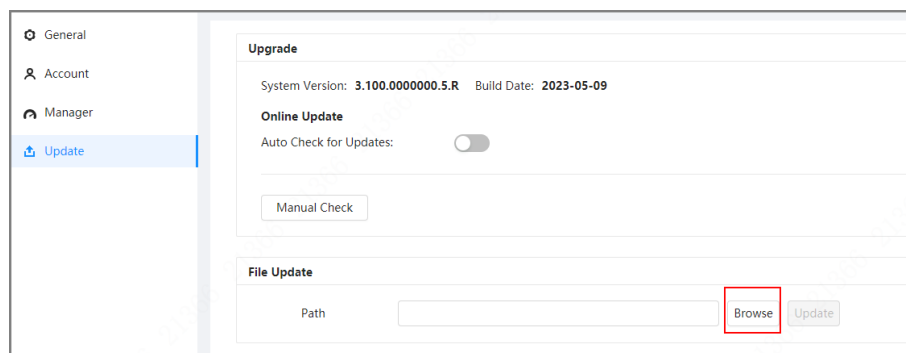


Figure 2-4 System update



**Step 3** Select **Settings** > **Maintenance Center** > **Update** to enter the system update page.

Figure 2-5 System update



**Step 4** Click **Browse**, select the \*.bin file, and then click **Update**.

Do not cut off the power supply during the update process. The device automatically restarts when the update is complete.

**Step 5** Click **Import**, select the \*.bin file, and then click **Update**.

Do not cut off the power supply during the update process. The device automatically restarts when the update is complete.

**Step 6** After the restart, you are redirected to the login page for you to log in to the device again.

Check the program version. If the version is the same as the software version of the update package, it means the update is successful.

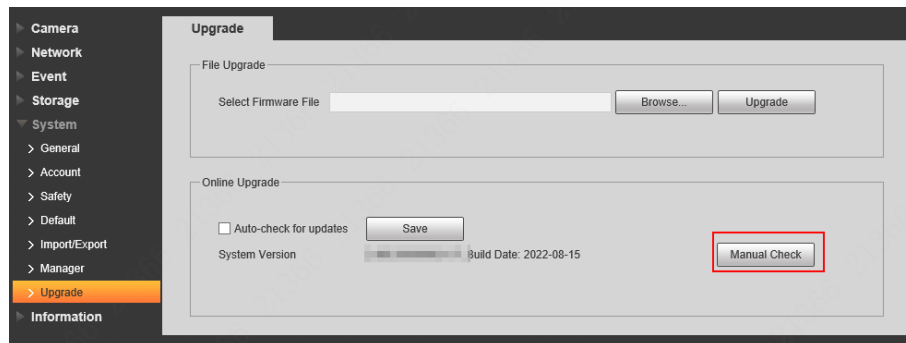
## 2.3.3 Cloud Update through the Webpage

### Procedure

**Step 1** Log in to the webpage of the device.

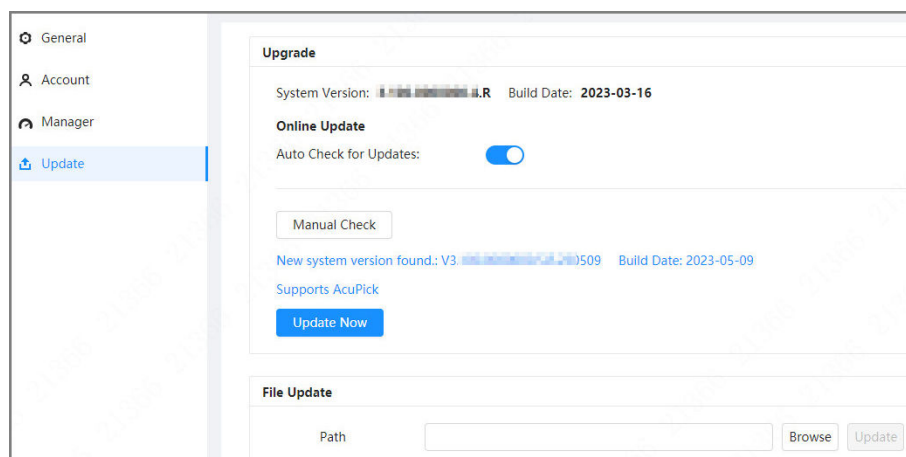
**Step 2** Select **Settings** > **System** > **Update** to enter the system update page.

Figure 2-6 System update



**Step 3** Select **Settings > Maintenance Center > Update** to enter the system update page.

Figure 2-7 System update



**Step 4** Click **Manual Check**.

Select **Auto Check for Updates**, and when a new version is available, the device automatically detects it.

**Step 5** If a new version is available, click **Update Now**. The system downloads the version file and starts the update process.

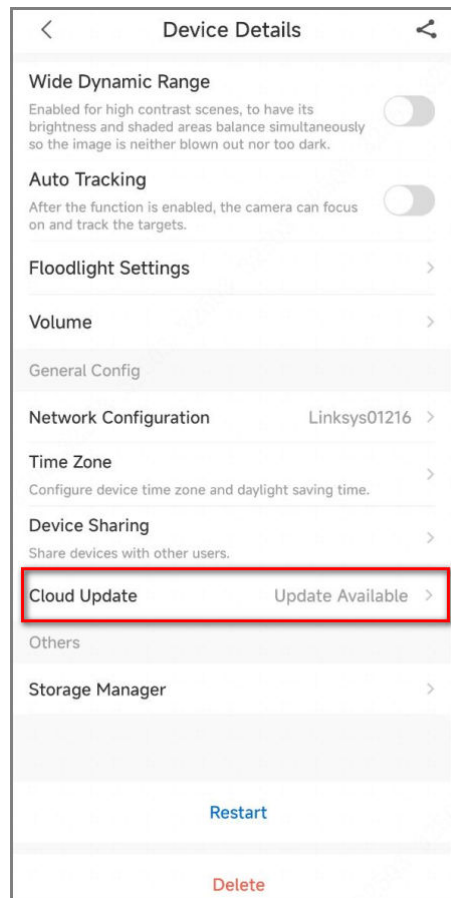
**Step 6** After the restart, you are redirected to the login page for you to log in to the device again. Check the program version. If the version is the same as the software version of the update package, it means the update is successful.

## 2.3.4 Cloud Update through DMSS

### Procedure

- Step 1** Log in to DMSS app.
- Step 2** Select the device that you want to update. Tap the device to enter the **Device Details** screen.
- Step 3** Tap **Device Program Version** to enter the update screen.

Figure 2-8 Update screen



**Step 4** Tap **Update** to start updating the system.

Do not cut off the power supply during the update process, and ensure that the network connection is normal.

The device automatically restarts and connects to the router when the update is complete.

**Step 5** Check the program version after the device restarts. If the version is the same as the software version of the update package, it means the update is successful.

## 2.4 Checking for Update Success

No matter which method is used, log in to the system again after the update is complete to check whether the version is correct.

ENABLING A SMARTER SOCIETY AND BETTER LIVING